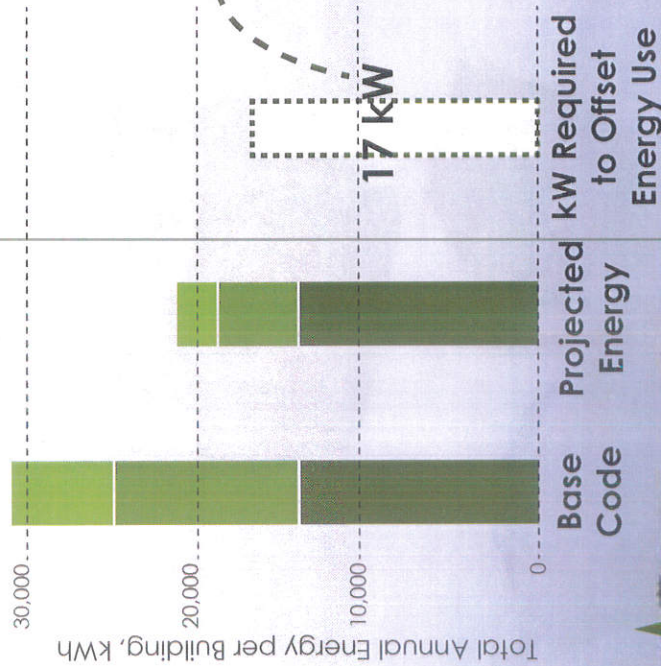
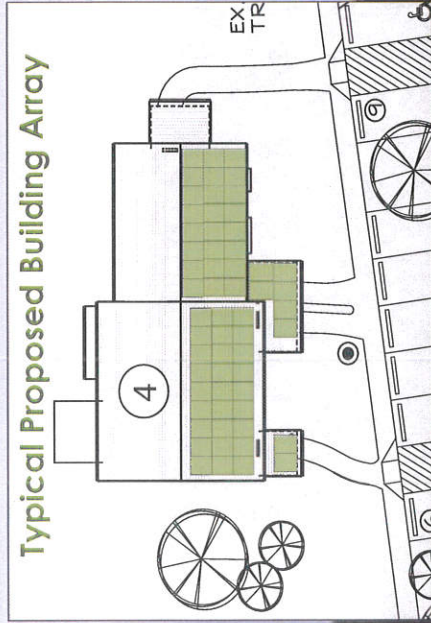


Net-Zero Ready



Proposed PV system will provide 160,000 kWh

Typical Proposed Building Array



Sources and Uses: Energy Use

Designed and built to be

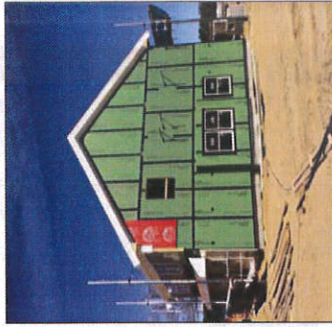
57%

more efficient than base code energy standards.

How did we get there?

1 High R-values

- R-25** Above Grade Walls
*Base Code= R-16
- R-18** Basement Wall/ Slab
*Base Code = R-10
- R-5** Windows
*Base Code=R-3.5



Super Efficient HVAC 2

Lunos HRV



Air Source Heat Pump

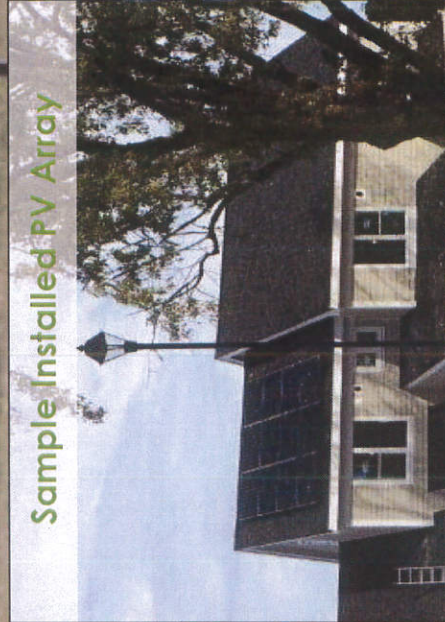


3 Air Tight Envelope

*Test Results 70% better than code



Sample Installed PV Array





MELPET FARM RESIDENCES

DENNIS, MA
27 Affordable Housing Units

Melpet Farm, built in 2015 by Preservation of Affordable Housing in collaboration with our sponsor, Housing Assistance Corporation of Cape Cod, consists of 27 units of rental housing on a 6.4 acre site. Affordable apartments serve households earning 60% of the area median income (AMI) or less, with 25% of the units set aside for those experiencing or facing homelessness. The eight newly-constructed residential buildings are two-story wood-framed structures in a simple, traditional local farmhouse style.

POAH is committed to greening its properties by pairing stewardship with environmental responsibility. Eco-friendly modernizations not only increase resident comfort but also pave the way for long-term savings, in addition to being good a business practice and consistent with our mission.



Site Plan



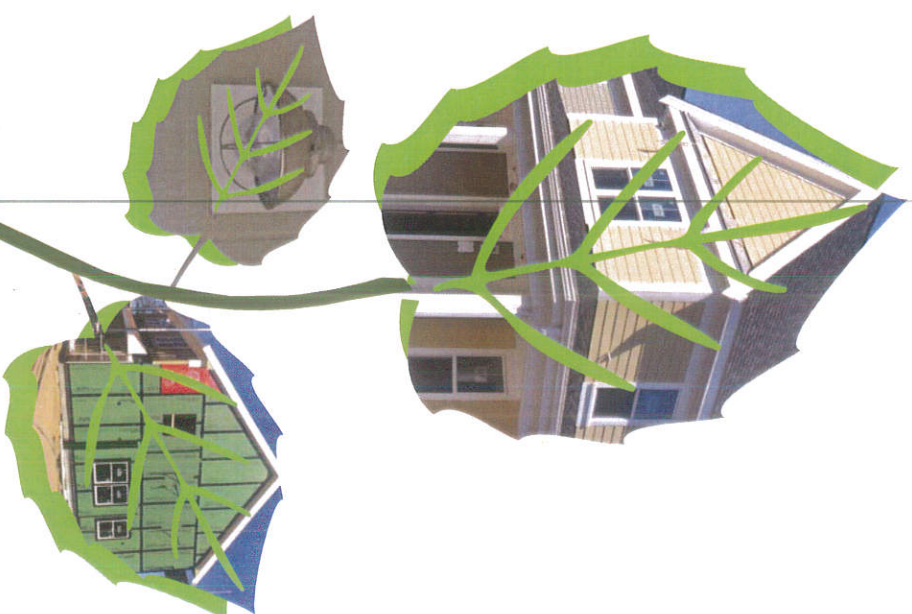
Housing Assistance Corporation
Cape Cod



For more information, please contact

Julie Klump

jklump@pocah.org



MELPET FARM

Sustainability
Initiatives